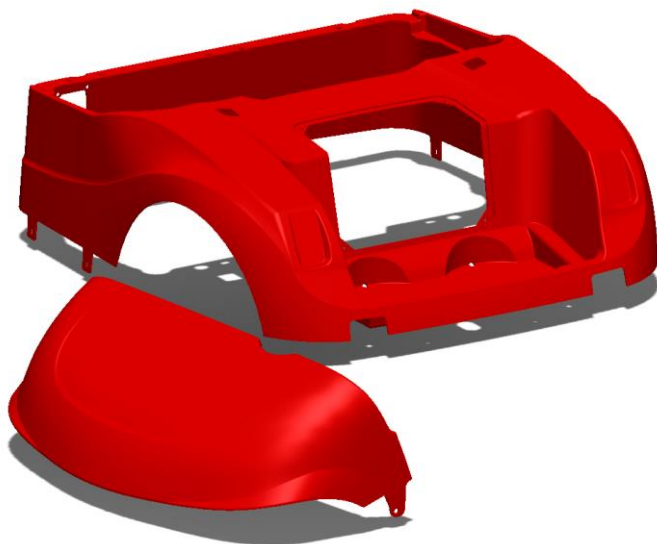


# BOD-DT0013

MADE IN THE  
★USA★  
WITH PRIDE



## Installation Instructions For E-Z-GO RXV

### TABLE OF CONTENTS:

- Step 1** - Remove Factory Top, Accessories & Sweater Basket
- Step 2** - Remove the Factory Rear Body
- Step 3** - Remove the Factory Front Body
- Step 4** - Install New Front Body
- Step 5** - Install New Rear Body & Access Cover
- Step 6** - Reassembly

**IMPORTANT:** Do not fully tighten hardware until instructed. Read through all instructions before beginning installation.

Prior to servicing, turn the key switch OFF, remove the key, and place the Forward / Reverse handle in Neutral position. Block all wheels when servicing the vehicle.

Make sure all wiring and wire harnesses are properly routed and secure before any initial testing is done. Position all electrical components in areas that are protected from moisture and/or salt air.

### ALL ELECTRIC VEHICLES:

To avoid unintentionally starting the vehicle, disconnect the batteries as shown on top right.

**NOTE:** For models with a TOW/RUN switch, place the switch in the TOW POSITION before disconnecting or connecting the battery cables.

### ELECTRIC VEHICLES WITH SPEED CONTROLLERS:

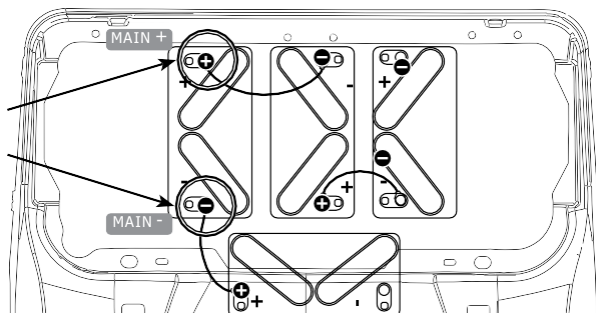
After disconnecting the batteries, discharge the controller capacitors as follows:

- Turn key to ON and place the forward/reverse handle in REVERSE.
- Slowly depress accelerator pedal and keep depressed until the reverse warning buzzer can no longer be heard. When buzzer stops sounding, the controller capacitors are discharged.

### NOTE:

BODIES COME WITH A PROTECTIVE FILM. THIS FILM NEEDS TO BE REMOVED BEFORE FINAL INSTALLATION.

DISCONNECT BATTERY  
CABLES HERE



## REMOVE THE FACTORY TOP, ACCESSORIES, & SWEATER BASKET

### STEP 1.1 REMOVE THE FACTORY TOP

- Remove the six 5MM Hex Bolts from the Factory Top (x2 Front & x4 Rear).



# REMOVE THE FACTORY TOP, ACCESSORIES, & SWEATER BASKET

## STEP 1.2 REMOVE BAG COVER AND ACCESSORIES

- Remove 10mm Bolt from the upper Bag Cover Brackets. Repeat on the other side.
- Remove the lower Bag Cover Brackets from the Sweater Basket using a T45 Bit. Repeat on the other side.
- Remove any additional accessories (Sand Bottle, Cooler Mount, etc.) using a 15mm Socket and Wrench.



## STEP 1.3 REMOVE THE BASKET

- Use a T45 Bit to remove the two bolts from the Sweater Basket that fasten it to the Seat Back Support. Repeat on the other side.



## STEP 1.4 REMOVE TOP FRAME SUPPORT

- Remove the two 15mm Hex bolts from the rear Top Frame Support. Repeat on the other side.



## STEP 1.5 REMOVE THE FACTORY SEAT BACK CUSHION

- Remove the two T45 Screws Seat Back Support. Repeat on the other side.



# REMOVE THE FACTORY REAR BODY

## STEP 2.1 REMOVE THE RUBBER SEALS

- Remove the two Rubber Weather Seals from the Rear Body and Seat Frame Supports and set aside for use later.



## STEP 2.2 REMOVE THE ACCESS PANEL

- Remove the four screws on the Access Panel using a T25 Star Bit.



## STEP 2.3 REMOVE THE BAG WELL COVER

- Remove the two screws using a T45 Star Bit, and remove the Bag Well Cover by prying it away from the Clip Mounts. Save the hardware.



## STEP 2.4 REMOVE THE SIDE TRIM

- Remove the five T45 screws from the 2-section Side Trim panels on each side of the golf car.
- This step will reveal the Rear Body Screws that fasten the Rear Body to the side of the Chassis.
- Save the Side Trim and hardware.





## REMOVE THE FACTORY REAR BODY (CONTINUED)

### STEP

2.6

#### REMOVE THE FACTORY REAR BODY

**A.** Remove the two T45 screws from each side of the Rear Body. Save the hardware. Go to the front of the Rear Body and remove the Four screws from the Charging Port Receptacle. Push the Charging Port assembly into the cavity so that it's out of the way. Save the Charging Port Receptacle and hardware.

**B.** Remove all the Rear Body hardware with a T50 Star Bit from the top of the Battery Compartment. Save the hardware.

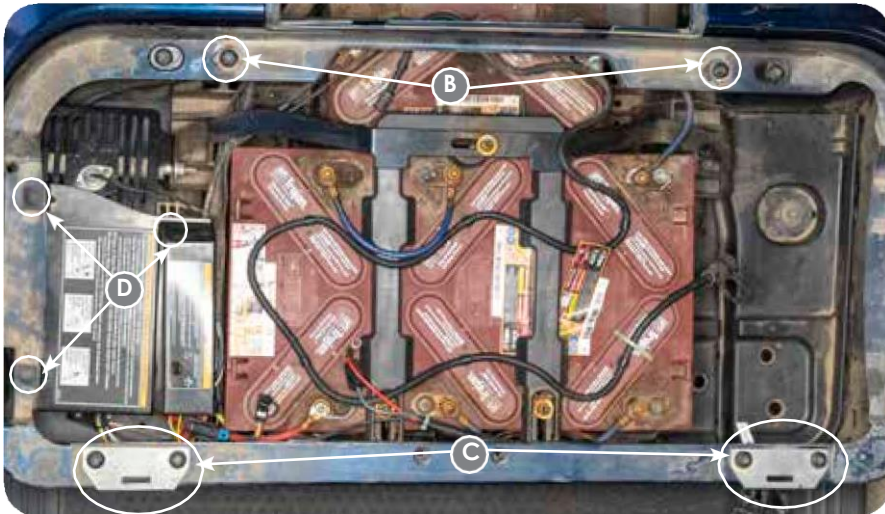
**C.** Remove the hardware and Cushion Hinge Plates using a T50 Star Bit. Save the hardware and Clips.

**D.** Remove the plastic hardware at three points on the Tow/Run Switch Console. Dislodge the Tow/Run Switch Console from the compartment, push it out the way and save the Fasteners for later reinstallation.

**Note.** For safety, the Tow/Run Switch should have been set to Tow at the start of work on the golf car.

**E.** Finally, lift the Rear Body away from the car Chassis and maneuver it around and over the J-shape Seat Back Supports.

**Note.** If you removed the hardware that fastens the Battery Compartment Cross Brace Bar, it will be completely unsecured. Use two of the removed T50 screws and refasten the Cross Brace Bar back onto the Chassis.



### STEP

2.7

#### REMOVE THE SEAT BACK SUPPORTS (OPTIONAL)

• Remove the two Hex Bolts and Nuts from the Seat Back Support with a 15mm Socket and 15mm Wrench. Save the hardware.

**Note.** This step can be skipped if being reused for a 2-passenger golf car configuration. 4-passenger golf cars will require DoubleTake Seat Back Supports, which are supplied with Rear Seat Kit.



# REMOVE THE FACTORY FRONT BODY

## STEP

### 3.1

#### REMOVE THE FRONT FRAME

- A.** First remove the Windshield if it has not been already done. Save the hardware
- B.** The Front Frame **must** be removed before the Factory Front Body can be removed. Using a flat head screwdriver, pry out the two Frame Cover Caps on the Dash to reveal the Front Frame hardware.
- C.** Remove the four 15mm Bolts securing the Front Frame, then remove the Front Frame. Save the Front Frame and hardware. Save the two Factory Rubber Seals on the Front Frame, for reinstallation.

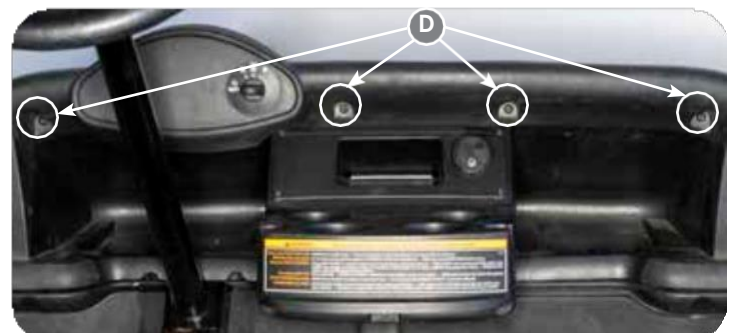


## STEP

### 3.2

#### REMOVE THE FACTORY FRONT BODY

- D.** To remove the Front Body, first remove the four screws from the underside of the dash trim using a T30 Star Bit.
- E.** Once done, pry back the top of the Outer Dash Cap, disconnect the Key Switch from the Factory Harness.
- F.** The Outer Dash Cap has 2 plastic hooks on both sides. Be careful not to break these hooks as they will need to be used again later.
- G.** Remove the unfastened Front Body from the golf car, then temporarily lay the Factory Key Switch Harness on the Front Body Compartment Tray for later. Finally, remove the Outer Dash Cap by pulling it away from the Dash Mounting Clips.



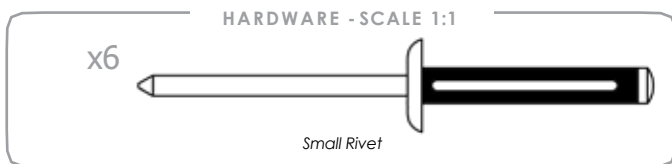
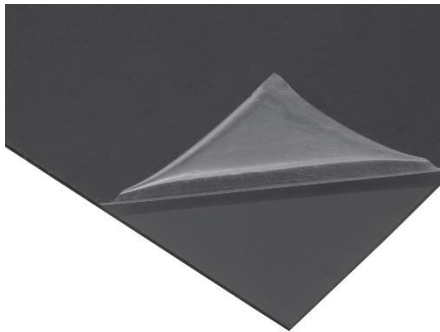
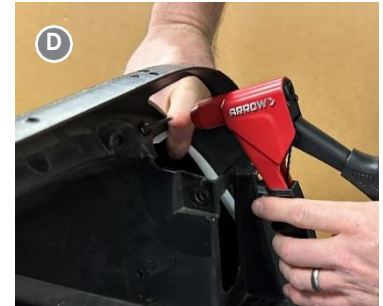


# INSTALL THE NEW FRONT BODY

## STEP 4.1 ATTACH THE NEW FRONT BODY

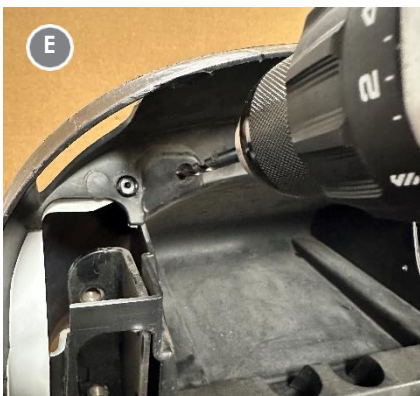
**Peel back the protective film from Body around installation area. Use a few pieces of tape to hold the film out of the way during assembly.**

- A.** Temporarily use the two of the saved T45 Side Trim Screws in each top Side Trim hole to help secure the Front Body in position for riveting. Stack some items under the front of the nose to help hold it in place under the dash lip.
- B.** Mark the 6 locations for riveting the body to the dash.
- C.** Starting in the corners, use your finger to pull up on the body so that it is tight against the dash edge and drill a 13/64" hole through the dash into the new body next to the factory mounting locations.
- D.** Rivet the Front Body in the corner and repeat on the other side. After the corners are secure, drill and rivet the remaining 4 locations.



## STEP 4.2 REPLACE THE FACTORY DASH TRIM

- E.** Drill a 1/4" hole through the new body in the center of the 4 factory screw locations.
- F.** Open the holes in the Outer Dash Cap with a 5/16" drill. Then, reconnect the key switch wires and reinstall the Dash Cap by using the 4 plastic push rivets through the factory screw locations.



# INSTALL THE NEW REAR BODY

## STEP

### 5.1

#### INSTALL THE NEW REAR BODY

A. Remove both Splash Guards to make it easier to install the Seat Back Support hardware after the Rear Body installation is complete. Simply pry away the four Push Rivets on each Mudguard. Save the Push Rivets for later if they are reusable.

B. Place the Rear Body over the golf car and Battery Compartment. Fasten the Rear Body with the saved T45 Screws and related Washers on each lower side.

C. Use the saved T50 Screws to fasten the body around the top of the Battery Compartment. Reinstall the saved Cushion Hinge Plates and T50 Screws as well.

D. At the front-side of the Rear Body, pull the Charging Port unit and cables through the Charging Port opening and make the connections to the saved Factory Charging Port Receptacle and fasten it to the Rear Body.

E. Go to the previously removed Run/Tow Switch Panel, drill holes into the body edge and fasten it to the Battery Compartment with new Push Rivets.

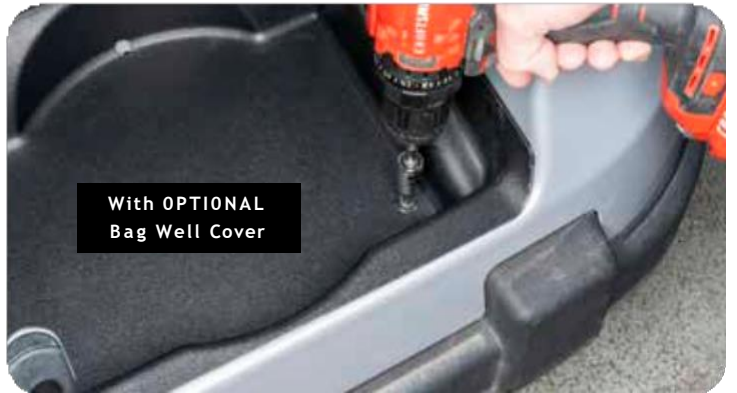
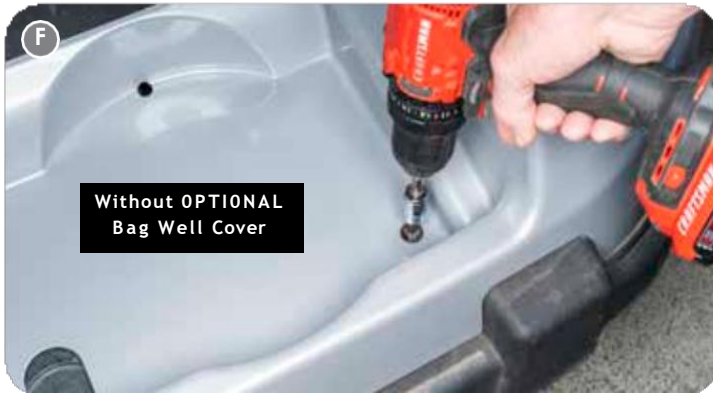
F. Use the saved T45 Screws to fasten the Rear Body to the golf car at the bottom of the Bag Well.

OPTIONAL BAG WELL COVER: Position the DoubleTake Bag Well Cover and use the saved T45 Screws to fasten the Bag Well Cover and Rear Body to the golf car at the bottom of the Bag Well. Using the existing holes along the sides of Bag Well Cover, drill holes through Rear Body and insert Push Rivets.

G. Finally, reinstall the Floor Mat and Side Trim Panels with the saved T45 Screws. Repeat on the other side.









# INSTALL SEAT BACK SUPPORTS & ACCESS COVER

## STEP 5.2 INSTALL THE SEAT BACK SUPPORTS & ACCESS COVER

A. With the Splash Guards removed, it will now be easier to access the hardware mounting locations for fastening each Seat Frame Support.

B. Install either DoubleTake Seat Back Supports for 4-Passenger golf cars (Positioned as shown) or the saved factory Seat Frame Supports for 2-Passenger golf cars.

C. Install the Seat Back Support types by using the two saved 15mm Bolts and Nuts on each side of the golf car. Use a 15mm Socket and 15mm Wrench applied to both sides of the hardware to prevent slipping during tightening.

D. Reinstall the removed Splash Guards with new Push Rivets and route any loose Bucket Harness /Taillight cables over the top of the Splash Guards. If needed tie the Bucket Harness to the Chassis with Cable Ties.

E. Finally, install the DoubleTake Access Panel with the provided hardware.



## REASSEMBLY

### STEP

6.0

#### REASSEMBLE FACTORY PARTS

- Reassemble the remaining components in reverse order using the factory hardware.

